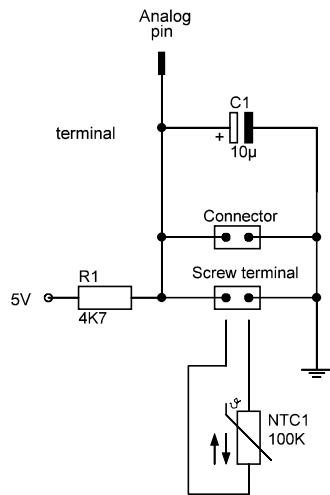
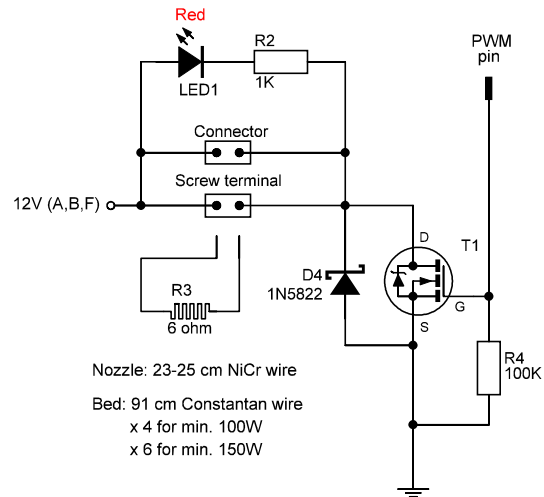


Temperatur sensor sections



Heater sections

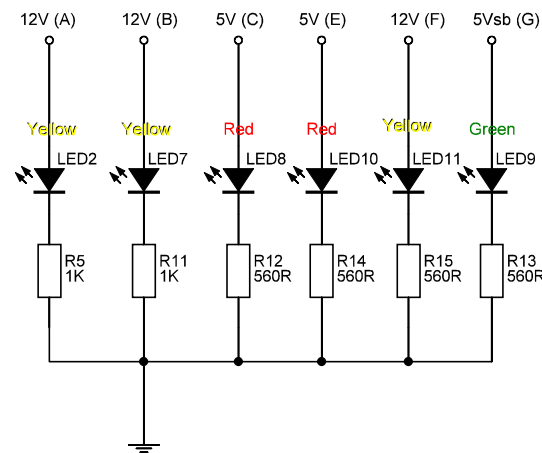


MOSFET suggestions

IRL3803 - 30V, 140A, 0.006R, TO-220
IRLB8748Pb - 30V, 65A, 0.0048R, TO-220
HUF75339 - 55V, 75A, 0.012R, TO-220
STP55NF06L - 60V, 55A, 0.018R, TO-220
RFP30N06LE - 60V, 30A, 0.047R, TO-220

<http://mcmanis.com/chuck/robotics/projects/esc2/FET-power.html>

Indicators



Power options

The board has two main 12V supply rails.

One for heated bed (B), and one for all other 12V (A).

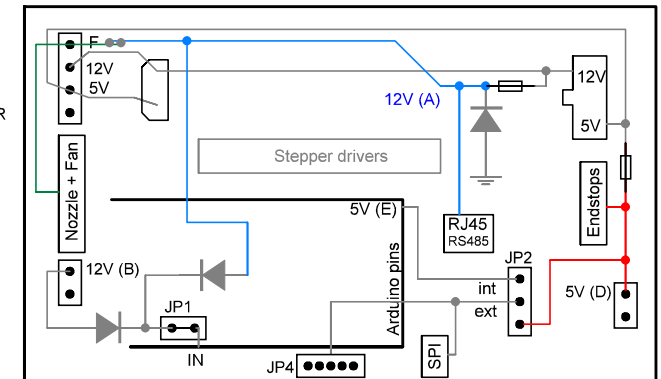
Rail (A) can be separated into two rails (A) and (F) by de-soldering two vias.

Thus rail (A) powers the steppers and rail (F) powers the extruders

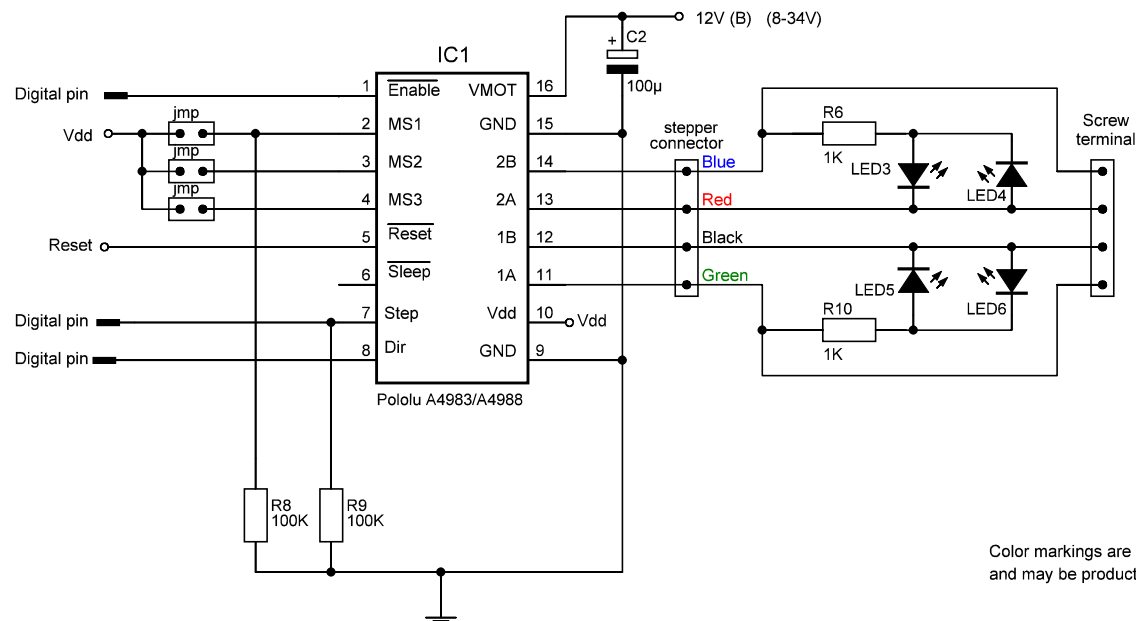
JP1 connects "Arduino IN" to either of the 12V supply rails.

JP2 selects onboard (Arduino 5V) or PC PWR 5V (ext) power source

PC PWR 5V (Ext) can off-load the on-board Arduino 5V regulator

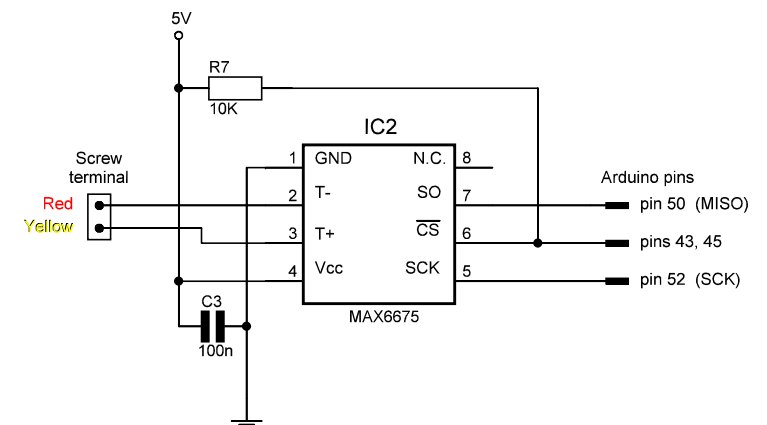


Stepper driver sections



Color markings are guides only, and
and may be product dependent

K-type temperature sensor

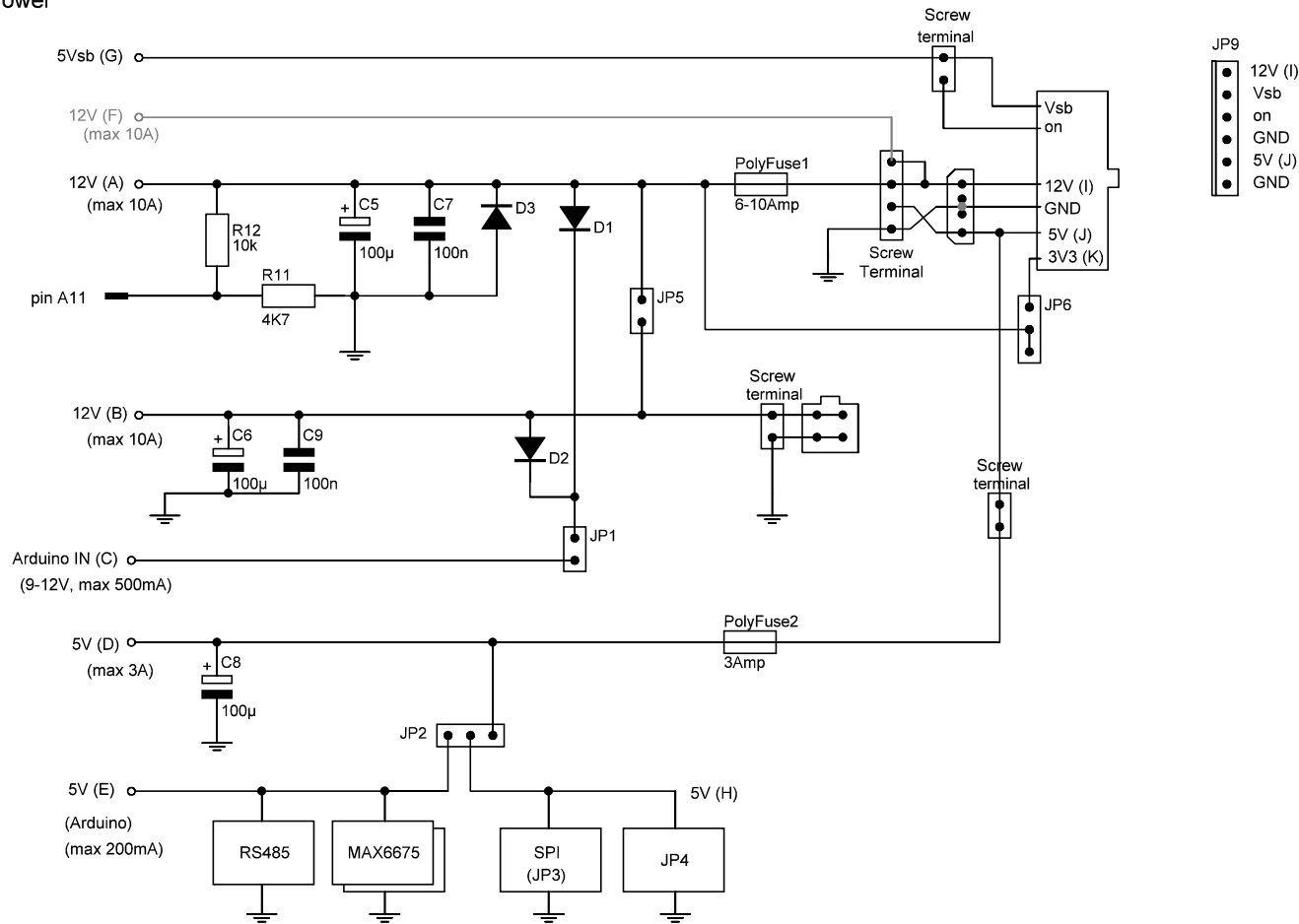


LabiRAMPS 2.55

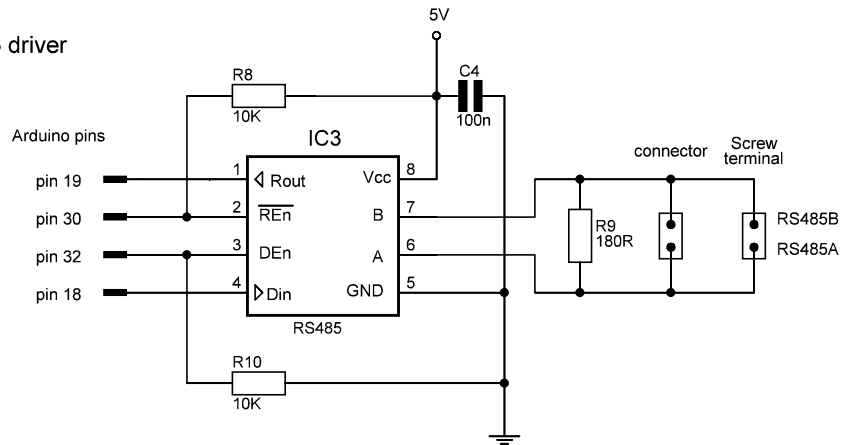
MrAlvin - June 2011

Revision 1A

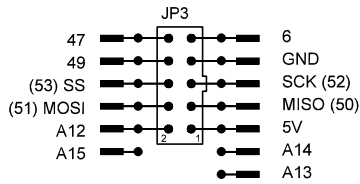
Power



RS485 driver



SPI connector



LabiRAMPS 2.55

MrAlvin - June 2011
Revision 1A